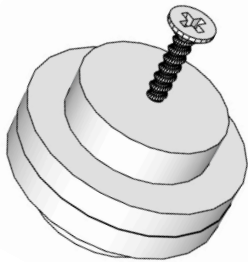


# RAD | COVER

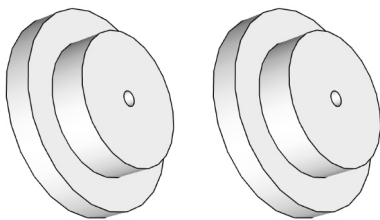
## Wall Fixing Instructions

Thank you for ordering your radiator covers from us. All our products come pre-assembled and can be used as freestanding covers, but if you wish to fix them securely to your wall you can follow this short guide. In most cases, you will only need a normal cross-head screwdriver (or an electric drill to make things easier).

### Step 1

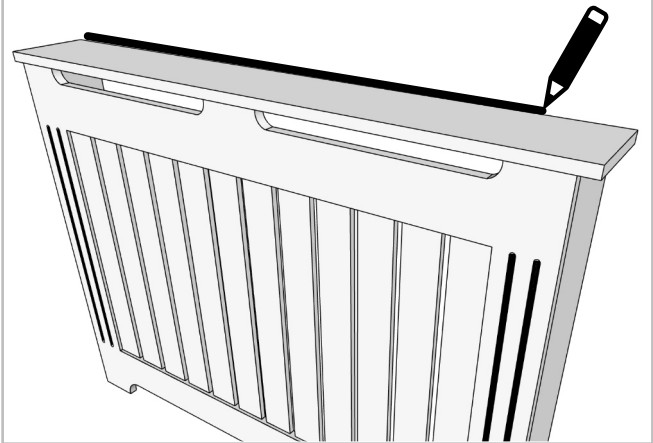


Inside your radiator cover you will find **2x** round pieces held together with a screw. Remove the screw and they will come apart like this:



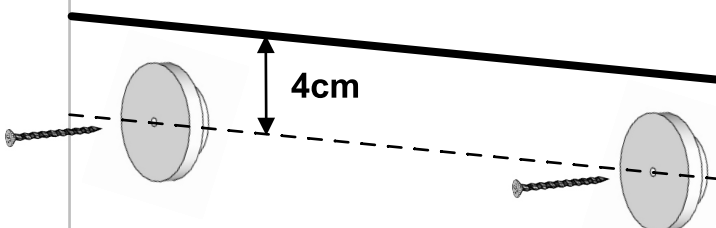
### Step 2

Place your radiator cover (freestanding) exactly where you want it to be fitted and draw a straight pencil line where the top of your radiator cover meets the wall.



### Step 3

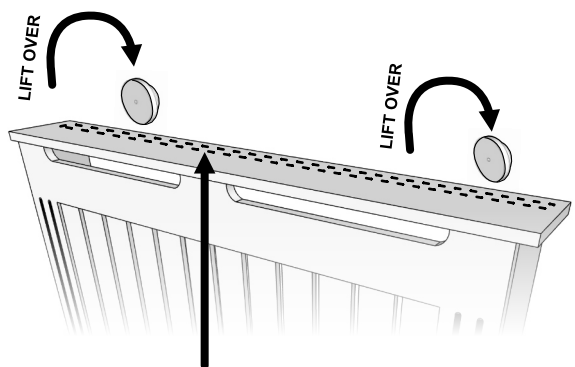
Position the round bits below the line you made at **Step 2** so that you have **4cm** from the line to the middle of each round bit. Screw the small round bits to the wall with the large circles towards you (the small circles to the wall).



The distance between the two bits can be 3 quarters of the width of your radiator cover (it doesn't need to be precise).

### Step 4

**Lift your radiator cover up and over the small bits** and place it into the final position. The small round bits will connect to a groove that's underneath your radiator cover's top piece.



(There's a groove under this)